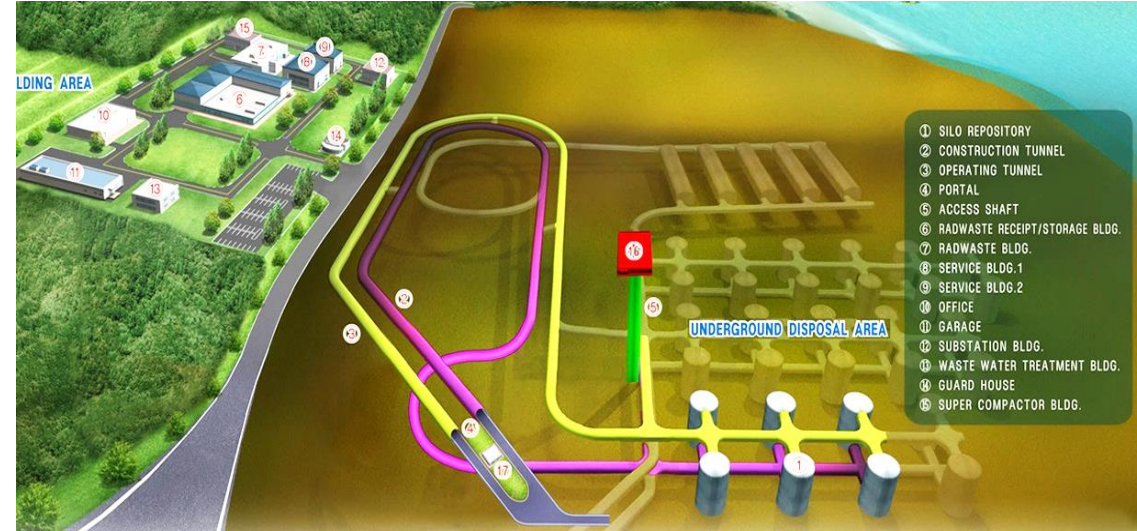
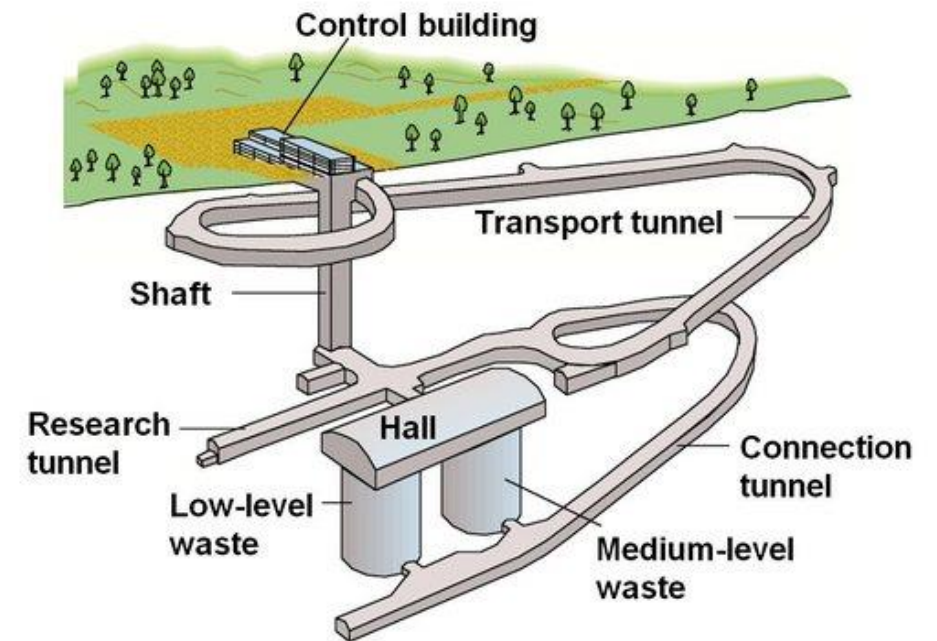


AINS GROUP – Nuclear Waste Management (formerly Saanio & Riekkola)



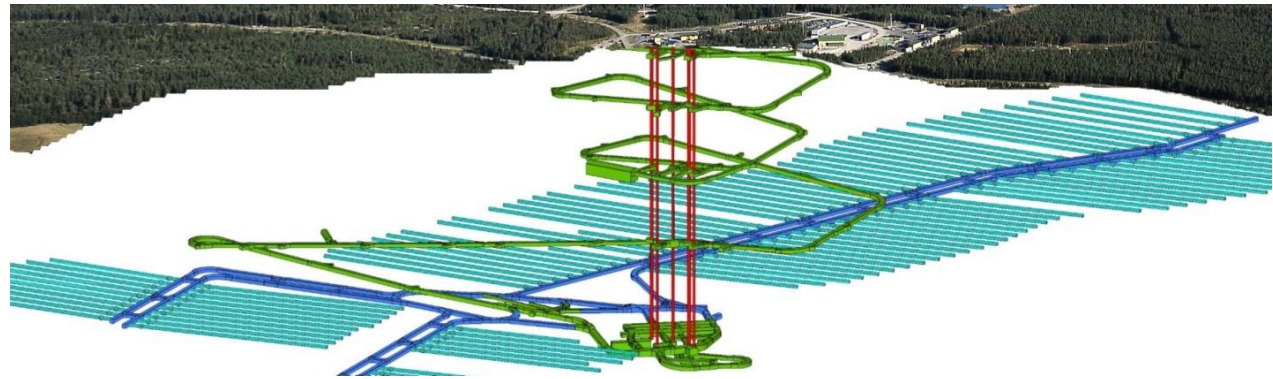
- 40 years experience in NWM projects
- Cover all 5 important tasks in nuclear waste management:
 - Site selection
 - Technical design
 - Long term safety analysis
 - Cost control
 - Public acceptance.
- 20 different waste repositories in 12 different countries
- 6 different nuclear power facilities



Posiva SNF disposal facility, Olkiluoto, Finland, Posiva, 1979-present

AINS GROUP have had roughly 400 assignments during the last 40 years for the Disposal facility (DF) for spent nuclear fuel (SNF). STUK gave the building license for the facility in 2015 and AINS GROUP had a key role in gaining this license.

AINS GROUP provided the concept development, cost estimations, main design and engineering (architectural) 3D-design for DF. Services have included repository siting development, site selection and layout updates integrating site data, rock suitability criteria and the EIA on radiological and many other impacts. Services have also included development for excavation, rock support, grouting, ventilation, equipment, qualification, construction and schedules. AINS GROUP has also done the main work in the long term safety case work.



DF consists of an underground repository at a depth of 400 - 450 m and above ground service buildings. Access routes are an inclined access tunnel and 4 vertical shafts.

References, High Level Waste

- **Posiva SNF disposal facility, Olkiluoto, Finland**, 956.000 m³, Posiva, 1979-present
- **SNF disposal facility, Forsmark, Sweden**, 2.300.000 m³, Swedish Nuclear Fuel and Waste Management Company (SKB), 1993-present
- **Fennovoima SNF disposal facility, Finland**, 600.000 m³, 2013-present
- **South Korea HLW repository**, 5.000.000 m³, Korea Atomic Energy Research Institute, 1996-2016
- **Canada HLW repository**, The Nuclear Waste Management Organization (NWMO), 2013-2014
- **Czech Deep Geological Repository (DGR)**, app. 1.700.000 m³, SÚRAO, 2016-2020
- **UK Geological disposal facility (GDF)**, AMEC, 2013-2014
- **UK Geological disposal facility (GDF)**, Atkins, 2017-2018
- **Repository for HLW and ILW radioactive waste, Russia**, NO RAO, 2013-2016
- **URL and possible repository for vitrified HLW, China**, 650.000 m³, CNNC /BRIUG, 2015-2016